

# Ultra Slim & Slim Fit Styles for **EVERY BODY**



Cover Photo Courtesy of:  
Joleen Willis Photography  
joleenwillis.com

*J. Barbaro*  
CLOTHIERS

Fine Men's Traditional and European Fashions

**Fashion-Forward & Comfortable  
for any shape or size**

(up to size 66)



shown:  
**ALLURE MEN®**  
Allure Men Heather Grey Clayton Suit - Style 262/N262



# RENT OR BUY STYLES



**MICHAEL KORS**  
Legacy Performance Stretch  
Ultra Slim Fit Tuxedo



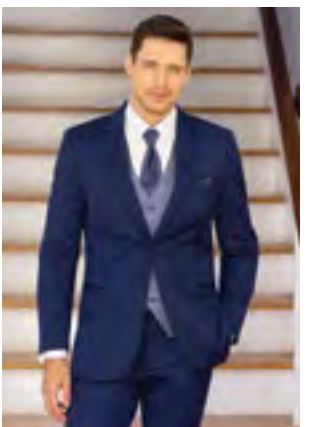
**MICHAEL KORS**  
Black Performance Stretch  
Ultra Slim Fit Wedding Suit



**MICHAEL KORS**  
Tan Performance Stretch  
Ultra Slim Fit Wedding Suit



**MICHAEL KORS**  
Medium Grey Performance Stretch  
Ultra Slim Fit Wedding Suit



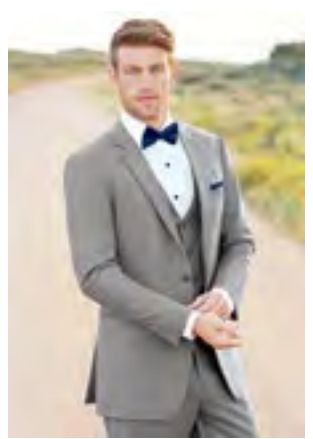
**MICHAEL KORS**  
Blue Performance Stretch  
Ultra Slim Fit Wedding Suit



**MICHAEL KORS**  
Navy Sterling  
Slim Fit Wedding Suit



**MICHAEL KORS**  
Steel Grey Sterling  
Slim Fit Wedding Suit



**ALLURE MEN**  
Heather Grey Clayton  
Ultra Slim Fit Suit



**MÖD**  
White/Silver Aries Paisley  
Slim Fit Tuxedo



**MÖD**  
Granite Aries Paisley  
Slim Fit Tuxedo



**MÖD**  
Black Aries Paisley  
Slim Fit Tuxedo



**stephengeoffrey**  
Ivory Classic Shawl  
Slim Fit Wedding Tuxedo



**stephengeoffrey**  
White Classic Shawl  
Slim Fit Wedding Tuxedo



# RENT OR BUY

THE SAME DESIGNER STYLES SO  
THE WHOLE PARTY MATCHES

# MIX&MATCH FOR THE PERFECT LOOK!



**Groom Look**

Buy Style N192

**Groomsmen Look**

Rent Style 421



# RENT OR BUY TO SUIT YOUR BUDGET!



**Groom Look**

Buy Style N272C

**Groomsmen Look**

Rent Style 421



**Groom Look**

Buy Style N91C

**Groomsmen Look**

Rent Style 350



**Groom Look**

Buy Style NHTC:

**Groomsmen Look**

Rent Style 302



**Groom Look**

Buy Style N292C

**Groomsmen Look**

Rent Style 202



**Groom Look**

Buy Style NHGC

**Groomsmen Look**

Rent Style 421





**921-Legacy Performance Stretch**  
Ultra Slim Fit Tuxedo  
by Michael Kors  
page 10



**421-Black Performance Stretch**  
Ultra Slim Fit Wedding Suit  
by Michael Kors  
page 11



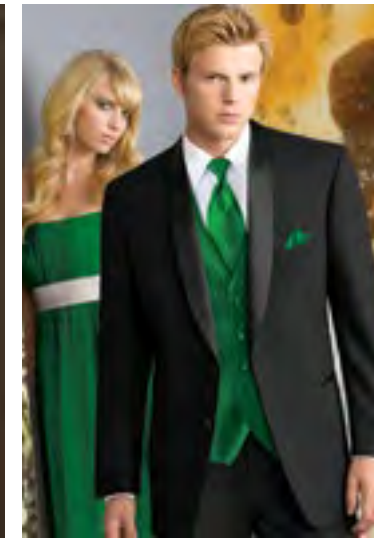
**981-Force Performance Stretch**  
Ultra Slim Fit Tuxedo  
by Michael Kors  
page 15



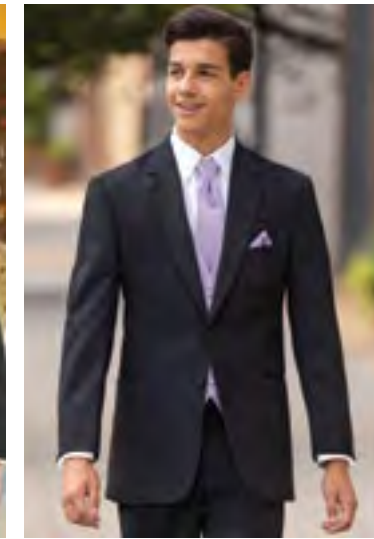
**471-Black Sterling**  
Ultra Slim Fit Wedding Suit  
by Michael Kors  
page 20



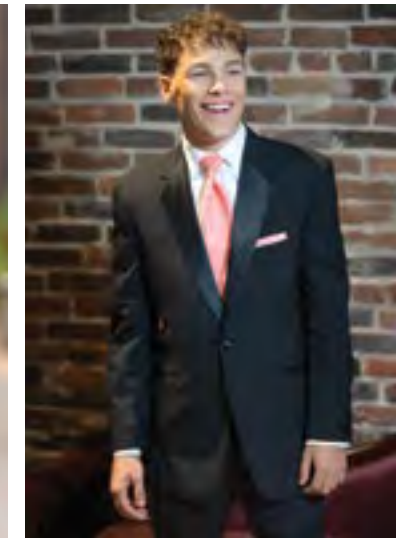
**182-Black Aries Paisley**  
Slim Fit Tuxedo  
by Mark of Distinction  
page 31



**822-Cyprus**  
Modern Fit Tuxedo  
by Stephen Geoffrey  
page 37



**852-Emerson**  
Modern Fit Tuxedo  
by Stephen Geoffrey  
page 38



**802-Black Troy**  
Modern Fit Tuxedo  
by Stephen Geoffrey  
page 39



**472-Black Sterling**  
Slim Fit Wedding Suit  
by Michael Kors  
page 21



**991-Berkeley**  
Ultra Slim Fit Tuxedo  
by Michael Kors  
page 22



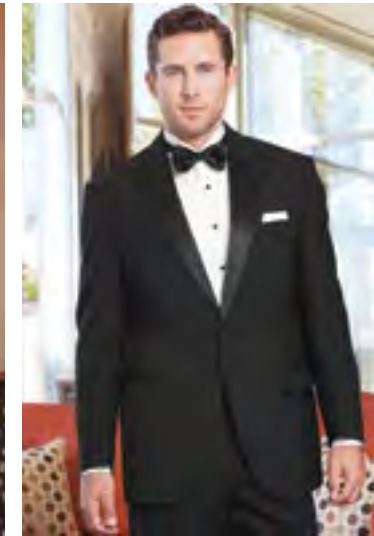
**990-Berkeley**  
Slim Fit Tuxedo  
by Michael Kors  
page 23



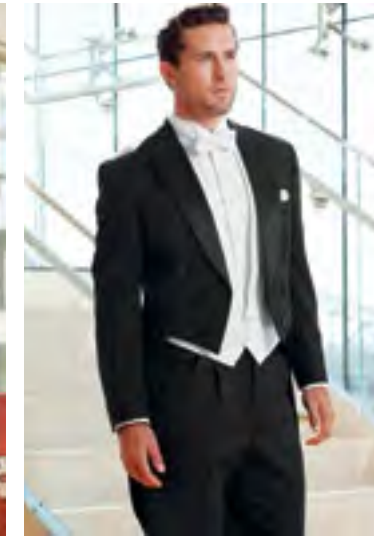
**192-Granite Aries Paisley**  
Slim Fit Tuxedo  
by Mark of Distinction  
page 30



**820-Classic Notch**  
Traditional Fit Tuxedo  
-  
page 44



**880-Classic Peak**  
Traditional Fit Tuxedo  
-  
page 46

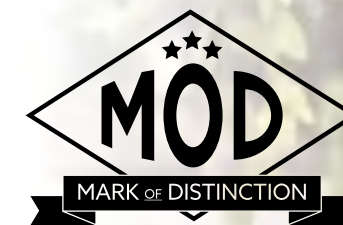


**588-Classic Peak Fulldress**  
Traditional Fit Tuxedo  
-  
page 47

**MICHAEL  
MICHAEL KORS**

**Legacy Ultra Slim Fit  
Performance Stretch Tuxedo**  
Style 921

Photo Courtesy of:  
Joleen Willis Photography  
joleenwillis.com



**Black Aries Paisley**  
Slim Fit Tuxedo  
Style 182



# GREY STYLES

# BLUE/RED STYLES



**350-Medium Grey Performance Stretch**  
Ultra Slim Fit Wedding Suit  
by Michael Kors  
page 13



**391-Steel Grey Sterling**  
Ultra Slim Fit Wedding Suit  
by Michael Kors  
page 18



**392-Steel Grey Sterling**  
Slim Fit Wedding Suit  
by Michael Kors  
page 19



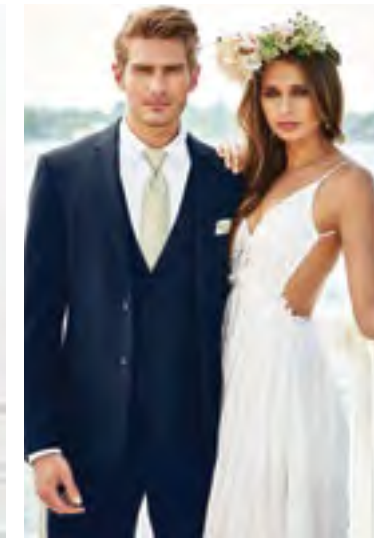
**262-Heather Grey Clayton**  
Ultra Slim Fit Suit  
by Allure Men  
page 25



**302-Blue Performance Stretch**  
Ultra Slim Fit Wedding Suit  
by Michael Kors  
page 14



**371-Navy Sterling**  
Ultra Slim Fit Wedding Suit  
by Michael Kors  
page 16



**372-Navy Sterling**  
Slim Fit Wedding Suit  
by Michael Kors  
page 17



**211-Cobalt Blue Tribeca**  
Ultra Slim Fit Tuxedo  
by Ike Behar  
page 26



**362-Heather Grey Aspen**  
Slim Fit Tuxedo  
by Stephen Geoffrey  
page 35



**301-Grey Portofino**  
Slim Fit Tuxedo  
by Tony Bowls  
page 36



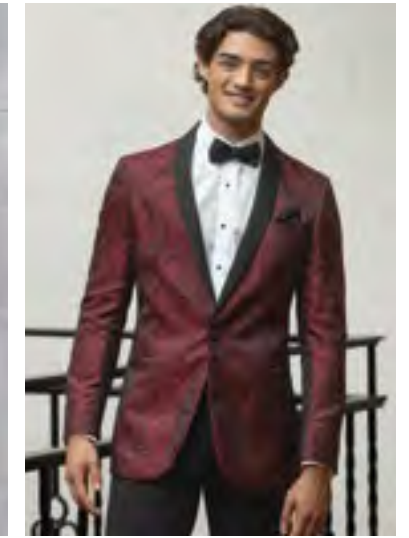
**221-Indigo Blue Lane**  
Ultra Slim Fit Tuxedo  
by Ike Behar  
page 27



**132-Cobalt Aries Paisley**  
Slim Fit Tuxedo  
by Mark of Distinction  
page 33



**201-Burgundy Empire**  
Ultra Slim Fit Tuxedo  
Kenneth Cole  
page 28



**122-Apple Red Aries Paisley**  
Slim Fit Tuxedo  
by Mark of Distinction  
page 32



## ALLURE MEN

**Heather Grey Clayton**  
Ultra Slim Fit Suit  
Style 262



## MICHAEL MICHAEL KORS

**Blue Performance Stretch**  
Ultra Slim Fit Wedding Suit  
Style 302

# TAN, WHITE & IVORY STYLES

# FASHION STYLES



**272-Tan Performance Stretch**  
Ultra Slim Fit Wedding Suit  
by Michael Kors  
page 12



**202-Sand Brunswick**  
Ultra Slim Fit Suit  
by Allure Men  
page 24



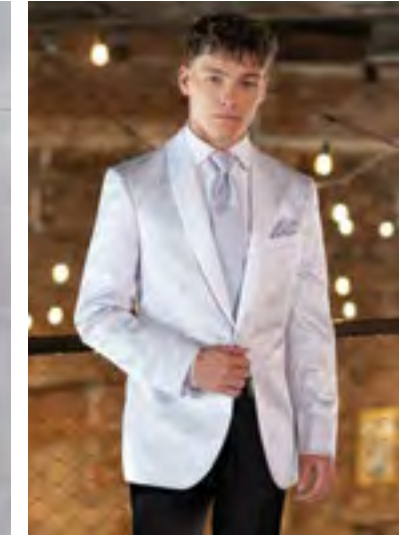
**252-Tan Havana**  
Slim Fit Suit  
by Lord West  
page 34



**211-Cobalt Blue Tribeca**  
Ultra Slim Fit Tuxedo  
by Ike Behar  
page 26



**201-Burgundy Empire**  
Ultra Slim Fit Tuxedo  
Kenneth Cole  
page 28



**172-White/Silver Aries Paisley**  
Slim Fit Tuxedo  
by Mark of Distinction  
page 29



**172-White/Silver Aries Paisley**  
Slim Fit Tuxedo  
by Mark of Distinction  
page 29



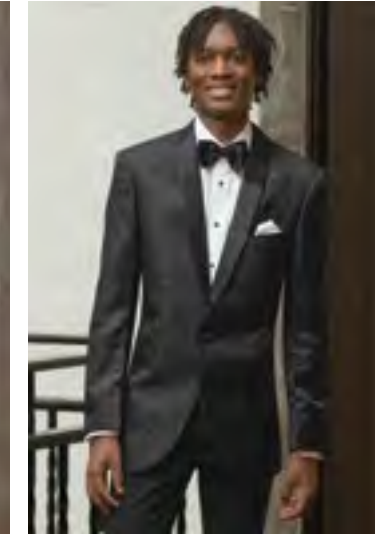
**751-Waverly**  
Ultra Slim Fit Tuxedo  
by Ike Behar  
page 40



**712-White Troy**  
Modern Fit Tuxedo  
by Stephen Geoffrey  
page 41



**192-Granite Aries Paisley**  
Slim Fit Tuxedo  
by Mark of Distinction  
page 30



**182-Black Aries Paisley**  
Slim Fit Tuxedo  
by Mark of Distinction  
page 31



**122-Apple Red Aries Paisley**  
Slim Fit Tuxedo  
by Mark of Distinction  
page 32



**701-White Classic Shawl**  
Slim Fit Tuxedo  
by Stephen Geoffrey  
page 45



**601-Ivory Classic Shawl**  
Slim Fit Tuxedo  
by Stephen Geoffrey  
page 42



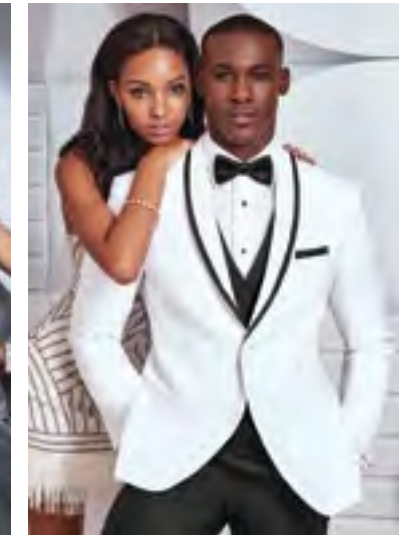
**602-Ivory Troy**  
Modern Fit Tuxedo  
by Stephen Geoffrey  
page 43



**132-Cobalt Aries Paisley**  
Slim Fit Tuxedo  
by Mark of Distinction  
page 33



**301-Grey Portofino**  
Slim Fit Tuxedo  
by Tony Bowls  
page 36



**751-Waverly**  
Ultra Slim Fit Tuxedo  
by Ike Behar  
page 40

# MICHAEL KORS

## Legacy Performance Stretch Tuxedo

Style 921

**U** **ULTRA SLIM FIT**  
Trim and tapered styling, fits close to the body.

### Size Scale

Men's coat sizes: 34-74

Boys' coat sizes: 3-18

921 pant sizes: 18-71

### Features:

- ▶ Tailored to fit all body types
- ▶ CoolMax® performance stretch fabric
- ▶ Satin notch lapel, side-vented, 30<sup>1</sup>/<sub>2</sub>" length
- ▶ Shown with ultra slim fit pants with buttons to accommodate suspenders

### Fabric Content:

CoolMax® / Sorona® / Wool

### To order ensemble as shown:

Coat	921
Ultra Slim Fit Pants	921
Shirt (upcharge)	96W
Tie	BSAT
Fullback Vest	F921
Jewelry	BLACK
Formal Shoes (upcharge)	BXS
Pocket Square (purchase only)	PWWH

### Black Pant Option:

Ultra Slim Fit Pants 921



SCAN ME  
for additional images



# MICHAEL KORS

## Black Performance Stretch Wedding Suit

Style 421

**U** **ULTRA SLIM FIT**  
Trim and tapered styling, fits close to the body.

### Size Scale

Men's coat sizes: 34-74

Boys' coat sizes: 3-18

921 pant sizes: 18-71

### Features:

- ▶ Tailored to fit all body types
- ▶ CoolMax® performance stretch fabric
- ▶ Self-framed notch lapel, side-vented, 29<sup>1</sup>/<sub>2</sub>" length
- ▶ Shown with ultra slim fit pants with belt loops and buttons to accommodate suspenders

### Fabric Content:

CoolMax® / Sorona® / Wool

### To order ensemble as shown:

Coat	421
Ultra Slim Fit Pants	921
Shirt (upcharge)	96W
Tie	WXRW
Fullback Vest	F921
Jewelry	BLACK
Formal Shoes (upcharge)	BXS
Pocket Square (purchase only)	PWRW
Belt (purchase only)	NBLT

### Black Pant Option:

Ultra Slim Fit Pants 921



SCAN ME  
for additional images



# MICHAEL KORS

## Tan Performance Stretch Wedding Suit

Style 272

**U** **ULTRA SLIM FIT**  
Trim and tapered styling, fits close to the body.

### Size Scale

Men's coat sizes: 34-74

Boys' coat sizes: 3-18

272 pant sizes: 18-71

### Features:

- ▶ Tailored to fit all body types
- ▶ CoolMax® performance stretch fabric
- ▶ Self-framed notch lapel, side-vented, 29½" length
- ▶ Shown with ultra slim fit pants with belt loops and buttons to accommodate suspenders

### Fabric Content:

CoolMax® / Sorona® / Wool

### To order ensemble as shown:

Coat	<b>272</b>
Ultra Slim Fit Pants	<b>272</b>
Shirt (upcharge)	<b>96W</b>
Tie	<b>WLTE</b>
Fullback Vest	<b>F272</b>
Jewelry	<b>BLACK</b>
Formal Shoes (upcharge)	<b>COP</b>
Pocket Square (purchase only)	<b>PLTE</b>
Belt (purchase only)	<b>NBLT</b>

### Tan Pant Option:

Ultra Slim Fit Pants	<b>272</b>
----------------------	------------



**SCAN ME**  
for additional images



# MICHAEL KORS

## Medium Grey Performance Stretch Wedding Suit

Style 350

**U** **ULTRA SLIM FIT**  
Trim and tapered styling, fits close to the body.

### Size Scale

Men's coat sizes: 34-74

Boys' coat sizes: 3-18

350 pant sizes: 18-71

### Features:

- ▶ Tailored to fit all body types
- ▶ CoolMax® performance stretch fabric
- ▶ Self-framed notch lapel, side-vented, 29½" length
- ▶ Shown with ultra slim fit pants with belt loops and buttons to accommodate suspenders

### Fabric Content:

CoolMax® / Sorona® / Wool

### To order ensemble as shown:

Coat	<b>350</b>
Ultra Slim Fit Pants	<b>350</b>
Shirt (upcharge)	<b>96W</b>
Tie	<b>BNST</b>
Fullback Vest	<b>FNST</b>
Jewelry	<b>BLACK</b>
Formal Shoes (upcharge)	<b>COP</b>
Pocket Square (purchase only)	<b>PNST</b>
Belt (purchase only)	<b>NBLT</b>

### Grey Pant Option:

Ultra Slim Fit Pants	<b>350</b>
----------------------	------------



**SCAN ME**  
for additional images

DIAMOND COLLECTION



# MICHAEL KORS

## Blue Performance Stretch Wedding Suit

Style 302



**ULTRA SLIM FIT**  
Trim and tapered styling, fits close to the body.

### Size Scale

Men's coat sizes: 34-74  
Boys' coat sizes: 3-18  
302 pant sizes: 18-71

### Features:

- ▶ Tailored to fit all body types
- ▶ CoolMax® performance stretch fabric
- ▶ Self-framed notch lapel, side-vented, 30<sup>1</sup>/<sub>2</sub>" length
- ▶ Shown with ultra slim fit pants with belt loops and buttons to accommodate suspenders

### Fabric Content:

CoolMax® / Sorona® / Wool

### To order ensemble as shown:

Coat	<b>302</b>
Ultra Slim Fit Pants	<b>302</b>
Shirt (upcharge)	<b>96W</b>
Tie	<b>WNMB</b>
Fullback Vest	<b>FNMB</b>
Jewelry	<b>BLACK</b>
Formal Shoes (upcharge)	<b>COP</b>
Pocket Square (purchase only)	<b>PNMB</b>
Belt (purchase only)	<b>NBLT</b>

### Blue Pant Option:

Ultra Slim Fit Pants	<b>302</b>
----------------------	------------



**SCAN ME**  
for additional images



# MICHAEL KORS

## Force Performance Stretch Tuxedo

Style 981



**ULTRA SLIM FIT**  
Trim and tapered styling, fits close to the body.

### Size Scale

Men's coat sizes: 34-66  
Boys' coat sizes: 3-18  
921 pant sizes: 18-71

### Features:

- ▶ Tailored to fit all body types
- ▶ CoolMax® performance stretch fabric
- ▶ Grosgrain notch lapel, side-vented, 29<sup>1</sup>/<sub>2</sub>" length
- ▶ Grosgrain trimmed pockets and covered buttons
- ▶ Shown with ultra slim fit pants with belt loops and buttons to accommodate suspenders

### Fabric Content:

CoolMax® / Sorona® / Wool

### To order ensemble as shown:

Coat	<b>981</b>
Ultra Slim Fit Pants	<b>921</b>
Shirt (upcharge)	<b>96W</b>
Tie	<b>WXGO</b>
Fullback Vest	<b>F921</b>
Jewelry	<b>BLACK</b>
Formal Shoes (upcharge)	<b>BXS</b>
Pocket Square (purchase only)	<b>PWGO</b>

### Black Pant Option:

Ultra Slim Fit Pants	<b>921</b>
----------------------	------------



**SCAN ME**  
for additional images

DIAMOND COLLECTION

# MICHAEL KORS

## Navy Sterling Wedding Suit

Style 371

**U** **ULTRA SLIM FIT**  
Trim and tapered styling, fits close to the body.

**Size Scale:**

Men's coat sizes: 34-44

Boys' coat sizes: N/A

371 pant sizes: 27-44

**Features:**

- ▶ Self-framed notch lapel, side-vented, 30 1/2" length
- ▶ Shown with ultra slim fit pants with belt loops and buttons to accommodate suspenders

**Fabric Content:**

Venetian Super 130's Wool

**Companion Coat:**

Style 372 - Navy Sterling Slim Fit Wedding Suit

**To order ensemble as shown:**

Coat	<b>371</b>
Ultra Slim Fit Pants	<b>371</b>
Shirt (upcharge)	<b>96W</b>
Tie	<b>BNNA</b>
Fullback Vest	<b>F372</b>
Jewelry	<b>BLACK</b>
Formal Shoes (upcharge)	<b>CXS</b>
Pocket Square (purchase only)	<b>PWWH</b>
Belt (purchase only)	<b>NBLT</b>

**Navy Pant Options:**

Ultra Slim Fit Pants	<b>371</b>
Modern Slim Fit Pants	<b>372</b>



**SCAN ME**  
for additional images

AVAILABLE IN  
TWO FITS:  
**ULTRA SLIM FIT**  
Shown  
**SLIM FIT**



AVAILABLE IN  
TWO FITS:  
**SLIM FIT**  
Shown  
**ULTRA SLIM FIT**

# MICHAEL KORS

## Navy Sterling Wedding Suit

Style 372

**S** **SLIM FIT**  
Contemporary styling with a slimming appearance.

**Size Scale:**

Men's coat sizes: 34-66

Boys' coat sizes: 3-18

372 pant sizes: 18-65

**Features:**

- ▶ Self-framed notch lapel, side-vented, 30 1/2" length
- ▶ Shown with modern slim fit pants with belt loops and buttons to accommodate suspenders

**Fabric Content:**

Venetian Super 130's Wool

**Companion Coat:**

Style 371 - Navy Sterling Ultra Slim Fit Wedding Suit

**To order ensemble as shown:**

Coat	<b>372</b>
Modern Slim Fit Pants	<b>372</b>
Shirt (upcharge)	<b>96W</b>
Tie	<b>WFSE</b>
Fullback Vest	<b>F372</b>
Jewelry	<b>BLACK</b>
Formal Shoes (upcharge)	<b>CXS</b>
Pocket Square (purchase only)	<b>PFSE</b>
Belt (purchase only)	<b>NBLT</b>

**Navy Pant Options:**

Ultra Slim Fit Pants	<b>371</b>
Modern Slim Fit Pants	<b>372</b>



**SCAN ME**  
for additional images

DIAMOND COLLECTION

DIAMOND COLLECTION

# MICHAEL KORS

## Steel Grey Sterling Wedding Suit

Style 391

**U** **ULTRA SLIM FIT**  
Trim and tapered styling, fits close to the body.

### Size Scale

Men's coat sizes: 34-44

Boys' coat sizes: N/A

391 pant sizes: 27-44

### Features:

- ▶ Self-framed notch lapel, side-vented, 30 1/2" length
- ▶ Shown with ultra slim fit pants with belt loops and buttons to accommodate suspenders

### Fabric Content:

Venetian Super 130's Wool

### Companion Coat:

Style 392 - Steel Grey Sterling Slim Fit Wedding Suit

### To order ensemble as shown:

Coat	<b>391</b>
Ultra Slim Fit Pants	<b>391</b>
Shirt (upcharge)	<b>96W</b>
Tie	<b>WNWI</b>
Fullback Vest	<b>F392</b>
Jewelry	<b>BLACK</b>
Formal Shoes (upcharge)	<b>CXS</b>
Pocket Square (purchase only)	<b>PNWI</b>
Belt (purchase only)	<b>NBLT</b>

### Steel Grey Pant Options:

Ultra Slim Fit Pants	<b>391</b>
Modern Slim Fit Pants	<b>392</b>



SCAN ME  
for additional images

AVAILABLE IN  
TWO FITS:  
ULTRA SLIM FIT  
Shown  
SLIM FIT



RENT  
OR  
BUY

# MICHAEL KORS

## Steel Grey Sterling Wedding Suit

Style 392

**S** **SLIM FIT**  
Contemporary styling with a slimming appearance.

### Size Scale

Men's coat sizes: 34-66

Boys' coat sizes: 3-18

392 pant sizes: 18-65

### Features:

- ▶ Self-framed notch lapel, side-vented, 30 1/2" length
- ▶ Shown with modern slim fit pants with belt loops and buttons to accommodate suspenders

### Fabric Content:

Venetian Super 130's Wool

### Companion Coat:

Style 391 - Steel Grey Sterling Ultra Slim Fit Wedding Suit

### To order ensemble as shown:

Coat	<b>392</b>
Modern Slim Fit Pants	<b>392</b>
Shirt (upcharge)	<b>96W</b>
Tie	<b>BNST</b>
Fullback Vest	<b>F392</b>
Jewelry	<b>BLACK</b>
Formal Shoes (upcharge)	<b>COP</b>
Pocket Square (purchase only)	<b>PNST</b>
Belt (purchase only)	<b>NBLT</b>

### Steel Grey Pant Options:

Ultra Slim Fit Pants	<b>391</b>
Modern Slim Fit Pants	<b>392</b>



SCAN ME  
for additional images

AVAILABLE IN  
TWO FITS:  
SLIM FIT  
Shown  
ULTRA SLIM FIT

DIAMOND COLLECTION

DIAMOND COLLECTION

# MICHAEL KORS

## Black Sterling Wedding Suit

Style 471



### ULTRA SLIM FIT

Trim and tapered styling, fits close to the body.

#### Size Scale

Men's coat sizes: 34-44

Boys' coat sizes: N/A

471 pant sizes 27-44

#### Features:

- ▶ Self-framed notch lapel, side-vented, 30<sup>1</sup>/<sub>2</sub>" length
- ▶ Shown with ultra slim fit pants with belt loops and buttons to accommodate suspenders

#### Fabric Content:

Venetian Super 130's Wool

#### Companion Coat:

Style 472 - Black Sterling Slim Fit Wedding Suit

#### To order ensemble as shown:

Coat	471
Ultra Slim Fit Pants	471
Shirt (upcharge)	96W
Tie	BXBL
Fullback Vest	F900
Jewelry	BLACK
Formal Shoes (upcharge)	BXS
Pocket Square (purchase only)	PWWH
Belt (purchase only)	NBLT

#### Black Pant Options:

Ultra Slim Fit Pants	471
Modern Slim Fit Pants	472



SCAN ME  
for additional images

AVAILABLE IN  
TWO FITS:  
ULTRA SLIM FIT  
Shown  
SLIM FIT



# MICHAEL KORS

## Black Sterling Wedding Suit

Style 472



### SLIM FIT

Contemporary styling with a slimming appearance.

#### Size Scale

Men's coat sizes: 34-66

Boys' coat sizes: 3-18

472 pant sizes: 18-65

#### Features:

- ▶ Self-framed notch lapel, side-vented, 30<sup>1</sup>/<sub>2</sub>" length
- ▶ Shown with modern slim fit pants with belt loops and buttons to accommodate suspenders

#### Fabric Content:

Venetian Super 130's Wool

#### Companion Coat:

Style 471 - Black Sterling Ultra Slim Fit Wedding Suit

#### To order ensemble as shown:

Coat	472
Modern Slim Fit Pants	472
Shirt (upcharge)	96W
Tie	BXBL
Fullback Vest	F900
Jewelry	BLACK
Formal Shoes (upcharge)	BXS
Pocket Square (purchase only)	PWWH
Belt (purchase only)	NBLT

#### Black Pant Options:

Ultra Slim Fit Pants	471
Modern Slim Fit Pants	472



SCAN ME  
for additional images

AVAILABLE IN  
TWO FITS:  
SLIM FIT  
Shown  
ULTRA SLIM FIT



# MICHAEL KORS

## Berkeley Tuxedo Style 991

**U** **ULTRA SLIM FIT**  
Trim and tapered styling, fits close to the body.

### Size Scale

Men's coat sizes: 34-44  
Boys' coat sizes: N/A  
991 pant sizes: 18-59

### Features:

- ▶ Grosgrain notch lapel, side-vented, 30 1/2" length
- ▶ Grosgrain trimmed pockets
- ▶ Shown with ultra slim fit pants with no stripe

### Fabric Content:

Venetian Super 130's Wool

### Companion Coat:

Style 990 - Berkeley Slim Fit

### To order ensemble as shown:

Coat	<b>991</b>
Ultra Slim Fit Pants	<b>991</b>
Shirt (upcharge)	<b>96W</b>
Tie	<b>BXBL</b>
Fullback Vest	<b>F900</b>
Jewelry	<b>BLACK</b>
Formal Shoes (upcharge)	<b>BDS</b>
Pocket Square (purchase only)	<b>PWWH</b>

### Black Pant Options:

Ultra Slim Fit Pants	<b>991</b>
Modern Slim Fit Pants	<b>990</b>



**SCAN ME**  
for additional images

AVAILABLE IN  
TWO FITS:  
**ULTRA SLIM FIT**  
Shown  
**SLIM FIT**



# MICHAEL KORS

## Berkeley Tuxedo Style 990

**S** **SLIM FIT**  
Contemporary styling with a slimming appearance.

### Size Scale

Men's coat sizes: 34-66  
Boys' coat sizes: 3-18  
990 pant sizes: 18-65

### Features:

- ▶ Grosgrain notch lapel, side-vented, 30 1/2" length
- ▶ Grosgrain trimmed pockets
- ▶ Shown with modern slim fit pants with grosgrain piping on the leg

### Fabric Content:

Venetian Super 130's Wool

### Companion Coat:

Style 991 - Berkeley Ultra Slim Fit

### To order ensemble as shown:

Coat	<b>990</b>
Modern Slim Fit Pants	<b>990</b>
Shirt (upcharge)	<b>96W</b>
Tie	<b>BXBL</b>
Fullback Vest	<b>F900</b>
Jewelry	<b>BLACK</b>
Formal Shoes (upcharge)	<b>BDS</b>
Pocket Square (purchase only)	<b>PWWH</b>

### Black Pant Options:

Ultra Slim Fit Pants	<b>991</b>
Modern Slim Fit Pants	<b>990</b>



**SCAN ME**  
for additional images

AVAILABLE IN  
TWO FITS:  
**SLIM FIT**  
Shown  
**ULTRA SLIM FIT**

DIAMOND COLLECTION

DIAMOND COLLECTION

# ALLURE MEN

## Sand Brunswick Suit

Style 202

**U** **ULTRA SLIM FIT**  
Trim and tapered styling, fits close to the body.

### Size Scale

Men's coat sizes: 34-66

Boys' coat sizes: 3-18

202 pant sizes: 18-65

### Features:

- ▶ Tailored to fit all body types
- ▶ Self-framed notch lapel, side-vented, 30" length
- ▶ Shown with ultra slim fit pants with belt loops and buttons to accommodate suspenders

### Fabric Content:

60/40 Super 130's Wool Blend

### To order ensemble as shown:

Coat	<b>202</b>
Ultra Slim Fit Pants	<b>202</b>
Shirt (upcharge)	<b>96W</b>
Tie	<b>WFWI</b>
Fullback Vest	<b>F202</b>
Jewelry	<b>BLACK</b>
Formal Shoes (upcharge)	<b>COP</b>
Pocket Square (purchase only)	<b>PFWI</b>
Belt (purchase only)	<b>NBLT</b>

### Sand Pant Option:

Ultra Slim Fit Pants	<b>202</b>
----------------------	------------



**SCAN ME**  
for additional images



# ALLURE MEN

## Heather Grey Clayton Suit

Style 262

**U** **ULTRA SLIM FIT**  
Trim and tapered styling, fits close to the body.

### Size Scale

Men's coat sizes: 34-74

Boys' coat sizes: 3-18

262 pant sizes: 18-71

### Features:

- ▶ Tailored to fit all body types
- ▶ Self-framed notch lapel, side-vented, 29 7/8" length
- ▶ Shown with ultra slim fit pants with belt loops and buttons to accommodate suspenders

### Fabric Content:

Super 130's Wool

### To order ensemble as shown:

Coat	<b>262</b>
Ultra Slim Fit Pants	<b>262</b>
Shirt (upcharge)	<b>96W</b>
Tie	<b>BXNA</b>
Fullback Vest	<b>F262</b>
Jewelry	<b>BLACK</b>
Formal Shoes (upcharge)	<b>CXS</b>
Pocket Square (purchase only)	<b>PWNA</b>

### Heather Grey Pant Option:

Ultra Slim Fit Pants	<b>262</b>
----------------------	------------



**SCAN ME**  
for additional images



**Cobalt Blue  
Tribeca Tuxedo**  
Style 211

**U** **ULTRA SLIM FIT**  
Trim and tapered styling, fits close to the body.

**Size Scale**  
Men's coat sizes: 34-60  
Boys' coat sizes: 3-18  
211 pant sizes: 18-59

- Features:**
- ▶ Tailored to fit all body types
  - ▶ Black satin peak lapel, side-vented, 30" length
  - ▶ Black satin double besom pockets
  - ▶ Shown with ultra slim fit pants with no stripe

**Fabric Content:**  
Super 120's Wool

**To order ensemble as shown:**

Coat	<b>211</b>
Ultra Slim Fit Pants	<b>211</b>
Shirt (upcharge)	<b>96W</b>
Tie	<b>BXBL</b>
Fullback Vest	<b>EXBL</b>
Jewelry	<b>BLACK</b>
Formal Shoes (upcharge)	<b>BDS</b>
Pocket Square (purchase only)	<b>PWWH</b>

**Cobalt Blue Pant Option:**

Ultra Slim Fit Pants **211**

**Black Pant Options:**

Ultra Slim Fit Pants **991**  
Modern Slim Fit Pants **990**



**SCAN ME**  
for additional images



**Indigo Blue  
Lane Tuxedo**  
Style 221

**U** **ULTRA SLIM FIT**  
Trim and tapered styling, fits close to the body.

**Size Scale**  
Men's coat sizes: 34-66  
Boys' coat sizes: 3-18  
221 pant sizes: 18-65

- Features:**
- ▶ Tailored to fit all body types
  - ▶ Satin-edged peak lapel, side-vented, 29 1/4" length
  - ▶ Shown with ultra slim fit pants with no stripe

**Fabric Content:**  
Super 120's Wool

**To order ensemble as shown:**

Coat	<b>221</b>
Ultra Slim Fit Pants	<b>221</b>
Shirt (upcharge)	<b>96W</b>
Tie	<b>BXCP</b>
Fullback Vest	<b>EXCP</b>
Jewelry	<b>BLACK</b>
Formal Shoes (upcharge)	<b>CXS</b>
Pocket Square (purchase only)	<b>PWCP</b>

**Indigo Blue Pant Option:**

Ultra Slim Fit Pants **221**



**SCAN ME**  
for additional images



# KENNETH COLE

## Burgundy Empire Tuxedo

Style 201

**U** **ULTRA SLIM FIT**  
Trim and tapered styling, fits close to the body.

### Size Scale

Men's coat sizes: 34-60

Boys' coat sizes: 3-18

991 pant sizes: 18-59

### Features:

- ▶ Tailored to fit all body types
- ▶ Black satin peak lapel, side-vented, 30<sup>1</sup>/<sub>2</sub>" length
- ▶ Black satin double besom pockets
- ▶ Shown with black ultra slim fit pants with no stripe

### Fabric Content:

Super 120's Wool

### To order ensemble as shown:

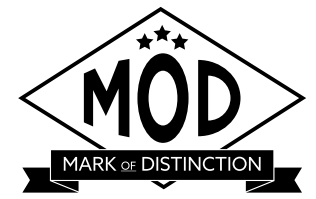
Coat	<b>201</b>
Ultra Slim Fit Pants	<b>991</b>
Shirt (upcharge)	<b>96W</b>
Tie	<b>BSAT</b>
Jewelry	<b>BLACK</b>
Formal Shoes (upcharge)	<b>BDS</b>
Pocket Square (purchase only)	<b>PWWH</b>

### Black Pant Options:

Ultra Slim Fit Pants	<b>991</b>
Modern Slim Fit Pants	<b>990</b>



**SCAN ME**  
for additional images



## White/Silver Aries Paisley Tuxedo

Style 172

RENT  
OR  
BUY

LIMITED  
SIZE SCALE

**S** **SLIM FIT**  
Contemporary styling with a slimming appearance.

### Size Scale

Men's coat sizes: 34-50 (even sizes only)

Boys' coat sizes: 14-18 (even sizes only)

N11P pant sizes: 26-44 (even sizes only)

### Features:

- ▶ **Limited size scale**
- ▶ White satin shawl lapel, side-vented, 30<sup>1</sup>/<sub>2</sub>" length
- ▶ Fabric covered buttons
- ▶ Shown with Black Euro Slim Stretch Suit Pants for purchase

### Fabric Content:

100% Polyester

### To order ensemble as shown:

Coat	<b>172</b>
Euro Slim Pants (purchase only)	<b>N11P</b>
Shirt (upcharge)	<b>96W</b>
Tie	<b>WFPT</b>
Jewelry	<b>BLACK</b>
Formal Shoes (purchase only)	<b>NSSKS</b>
Pocket Square (purchase only)	<b>PFPT</b>

### White Pant Options:

Euro Slim Pants (purchase only)	<b>N17P</b>
Modern Slim Fit Pants	<b>750</b>

### Black Pant Options:

Euro Slim Pants (purchase only)	<b>N11P</b>
Ultra Slim Fit Pants	<b>921</b>
Modern Slim Fit Pants	<b>990</b>



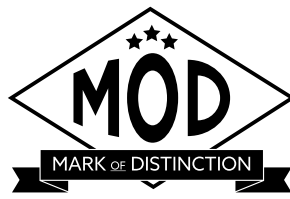
**SCAN ME**  
for additional images



DIAMOND COLLECTION

DIAMOND COLLECTION





**Granite Aries  
Paisley Tuxedo**  
Style 192

**S** **SLIM FIT**  
Contemporary styling  
with a slimming  
appearance.

**Size Scale**  
**Men's coat sizes: 34-66** (even sizes only)  
**Boys' coat sizes: 3-18** (even sizes only)  
**N11P pant sizes: 26-44** (even sizes only)

- Features:**
- ▶ Black satin shawl lapel, side-vented, 30 1/2" length
  - ▶ Fabric covered buttons
  - ▶ Shown with Black Euro Slim Stretch Suit Pants for purchase

**Fabric Content:**  
100% Polyester

**To order ensemble as shown:**

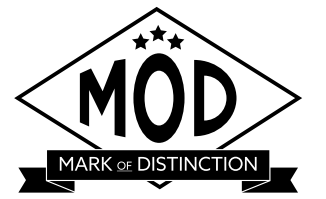
Coat	<b>192</b>
Euro Slim Pants (purchase only)	<b>N11P</b>
Shirt (upcharge)	<b>96W</b>
Tie	<b>BSAT</b>
Jewelry	<b>BLACK</b>
Formal Shoes (purchase only)	<b>NCSSS</b>
Pocket Square (purchase only)	<b>PWBL</b>

**Black Pant Options:**

Euro Slim Pants (purchase only)	<b>N11P</b>
Ultra Slim Fit Pants	<b>921</b>
Modern Slim Fit Pants	<b>990</b>



**SCAN ME**  
for additional images



**Black Aries  
Paisley Tuxedo**  
Style 182

**S** **SLIM FIT**  
Contemporary styling  
with a slimming  
appearance.

**Size Scale**  
**Men's coat sizes: 34-66** (even sizes only)  
**Boys' coat sizes: 3-18** (even sizes only)  
**N11P pant sizes: 26-44** (even sizes only)

- Features:**
- ▶ Black satin shawl lapel, side-vented, 30 1/2" length
  - ▶ Fabric covered buttons
  - ▶ Shown with Black Euro Slim Stretch Suit Pants for purchase

**Fabric Content:**  
100% Polyester

**To order ensemble as shown:**

Coat	<b>182</b>
Euro Slim Pants (purchase only)	<b>N11P</b>
Shirt (upcharge)	<b>96W</b>
Tie	<b>BSAT</b>
Jewelry	<b>BLACK</b>
Formal Shoes (purchase only)	<b>NBSKS</b>
Pocket Square (purchase only)	<b>PWWH</b>

**Black Pant Options:**

Euro Slim Pants (purchase only)	<b>N11P</b>
Ultra Slim Fit Pants	<b>921</b>
Modern Slim Fit Pants	<b>990</b>

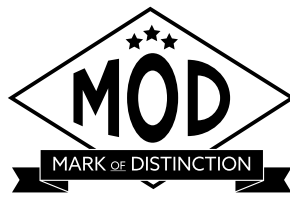


**SCAN ME**  
for additional images



DIAMOND COLLECTION

DIAMOND COLLECTION



## Apple Red Aries Paisley Tuxedo

Style 122



**SLIM FIT**  
Contemporary styling with a slimming appearance.

### Size Scale

**Men's coat sizes: 34-50** (even sizes only)

**Boys' coat sizes: 14-18** (even sizes only)

**N11P pant sizes: 26-44** (even sizes only)

### Features:

- ▶ **Limited size scale**
- ▶ Black satin shawl lapel, side-vented, 30<sup>1</sup>/<sub>2</sub>" length
- ▶ Fabric covered buttons
- ▶ Shown with Black Euro Slim Stretch Suit Pants for purchase

### Fabric Content:

100% Polyester

### To order ensemble as shown:

Coat	<b>122</b>
Euro Slim Pants (purchase only)	<b>N11P</b>
Shirt (upcharge)	<b>96W</b>
Tie	<b>BSAT</b>
Jewelry	<b>BLACK</b>
Formal Shoes (purchase only)	<b>NCSSS</b>
Pocket Square (purchase only)	<b>PWBL</b>

### Black Pant Options:

Euro Slim Pants (purchase only)	<b>N11P</b>
Ultra Slim Fit Pants	<b>921</b>
Modern Slim Fit Pants	<b>990</b>

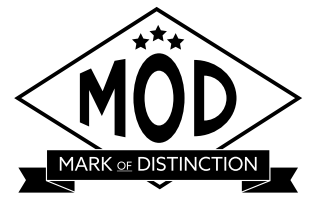


**SCAN ME**  
for additional images

LIMITED  
SIZE SCALE



LIMITED  
SIZE SCALE



## Cobalt Aries Paisley Tuxedo

Style 132



**SLIM FIT**  
Contemporary styling with a slimming appearance.

### Size Scale

**Men's coat sizes: 34-50** (even sizes only)

**Boys' coat sizes: 14-18** (even sizes only)

**N11P pant sizes: 26-44** (even sizes only)

### Features:

- ▶ **Limited size scale**
- ▶ Black satin shawl lapel, side-vented, 30<sup>1</sup>/<sub>2</sub>" length
- ▶ Fabric covered buttons
- ▶ Shown with Black Euro Slim Stretch Suit Pants for purchase

### Fabric Content:

100% Polyester

### To order ensemble as shown:

Coat	<b>132</b>
Euro Slim Pants (purchase only)	<b>N11P</b>
Shirt (upcharge)	<b>96W</b>
Tie	<b>BSAT</b>
Jewelry	<b>BLACK</b>
Formal Shoes (purchase only)	<b>NBLVS</b>
Pocket Square (purchase only)	<b>PWBL</b>

### Black Pant Options:

Euro Slim Pants (purchase only)	<b>N11P</b>
Ultra Slim Fit Pants	<b>921</b>
Modern Slim Fit Pants	<b>990</b>



**SCAN ME**  
for additional images

DIAMOND COLLECTION

**Tan Havana Suit**  
Style 252

**S** **SLIM FIT**  
Contemporary styling  
with a slimming  
appearance.

**Size Scale**  
Men's coat sizes: 34-66  
Boys' coat sizes: 3-18  
252 pant sizes: 18-65

- Features:**
- ▶ Self notch lapel, bone buttons, side-vented, 30" length
  - ▶ Shown with modern slim fit pants with no stripe

**Fabric Content:**  
Ultra Fine Poly / Wool Blend

**To order ensemble as shown:**

Coat	<b>252</b>
Modern Slim Fit Pants	<b>252</b>
Shirt (upcharge)	<b>96W</b>
Tie	<b>WRCP</b>
Fullback Vest	<b>F252</b>
Jewelry	<b>BLACK</b>
Formal Shoes (upcharge)	<b>CXS</b>
Pocket Square (purchase only)	<b>PKWH</b>

**Tan Pant Options:**

Ultra Slim Fit Pants	<b>251</b>
Modern Slim Fit Pants	<b>252</b>



**Heather Grey Aspen Tuxedo**  
Style 362

**S** **SLIM FIT**  
Contemporary styling  
with a slimming  
appearance.

**Size Scale**  
Men's coat sizes: 34-66  
Boys' coat sizes: 3-18  
362 pant sizes: 18-65

- Features:**
- ▶ Satin-edged notch lapel, side-vented, 30 1/2" length
  - ▶ Shown with modern slim fit pants with no stripe

**Fabric Content:**  
100% Wool

**To order ensemble as shown:**

Coat	<b>362</b>
Modern Slim Fit Pants	<b>362</b>
Shirt (upcharge)	<b>96W</b>
Tie	<b>BXWH</b>
Fullback Vest	<b>F362</b>
Jewelry	<b>BLACK</b>
Formal Shoes (upcharge)	<b>CXS</b>
Pocket Square (purchase only)	<b>PWWH</b>

**Grey Pant Options:**

Ultra Slim Fit Pants	<b>361</b>
Modern Slim Fit Pants	<b>362</b>

**Grey Portofino Tuxedo**

Style 301



**SLIM FIT**  
Contemporary styling with a slimming appearance.

**Size Scale**

Men's coat sizes: 34-56

Boys' coat sizes: 14-18

850 pant sizes: 18-71

**Features:**

- ▶ **Limited size scale**
- ▶ Black satin peak lapel, non-vented, 30" length
- ▶ Black satin double besom pockets
- ▶ Shown with modern slim fit pants with a beaded stripe

**Fabric Content:**

55/45 Super Fine Wool Blend

**To order ensemble as shown:**

Coat	<b>301</b>
Modern Slim Fit Pants	<b>850</b>
Shirt (upcharge)	<b>96W</b>
Tie	<b>WKBL</b>
Fullback Vest	<b>F900</b>
Jewelry	<b>BLACK</b>
Formal Shoes (upcharge)	<b>BDS</b>
Pocket Square (purchase only)	<b>PSWH</b>

**Black Pant Options:**

Ultra Slim Fit Pants	<b>991</b>
Modern Slim Fit Pants	<b>850</b>

LIMITED SIZE SCALE



**Cyprus Tuxedo**

Style 822



**MODERN FIT**  
Fashion-forward styling with a flattering appearance.

**Size Scale**

Men's coat sizes: 34-66

Boys' coat sizes: 3-18

850 pant sizes: 18-71

**Features:**

- ▶ Satin shawl lapel, non-vented, 31 1/2" length
- ▶ Shown with modern slim fit pants with a beaded stripe

**Fabric Content:**

100% Tropical Worsted Wool

**To order ensemble as shown:**

Coat	<b>822</b>
Modern Slim Fit Pants	<b>850</b>
Shirt (upcharge)	<b>76W</b>
Tie	<b>WSKG</b>
Fullback Vest	<b>SYKG</b>
Jewelry	<b>BLACK</b>
Formal Shoes (upcharge)	<b>BDS</b>
Pocket Square (purchase only)	<b>PSKG</b>

**Black Pant Option:**

Modern Slim Fit Pants	<b>850</b>
-----------------------	------------



stephengeoffrey

## Emerson Tuxedo

Style 852



### MODERN FIT

Fashion-forward styling with a flattering appearance.

#### Size Scale

Men's coat sizes: 34-56

Boys' coat sizes: 14-18

850 pant sizes: 18-71

#### Features:

- ▶ **Limited size scale**
- ▶ Grosgrain notch lapel, non-vented, 3 1/2" length
- ▶ Grosgrain buttons
- ▶ Shown with modern slim fit pants with a beaded stripe

#### Fabric Content:

100% Tropical Worsted Wool

#### To order ensemble as shown:

Coat	852
Modern Slim Fit Pants	850
Shirt (upcharge)	96W
Tie	WKLA
Fullback Vest	HRLA
Jewelry	BLACK
Formal Shoes (upcharge)	BDS
Pocket Square (purchase only)	PKLA

#### Black Pant Option:

Modern Slim Fit Pants	850
-----------------------	-----



LIMITED SIZE SCALE



stephengeoffrey

## Black Troy Tuxedo

Style 802



### MODERN FIT

Fashion-forward styling with a flattering appearance.

#### Size Scale

Men's coat sizes: 34-56

Boys' coat sizes: 14-18

850 pant sizes: 18-71

#### Features:

- ▶ **Limited size scale**
- ▶ Satin notch lapel, non-vented, 3 1/2" length
- ▶ Shown with modern slim fit pants with a beaded stripe

#### Fabric Content:

100% Worsted Wool

#### To order ensemble as shown:

Coat	802
Modern Slim Fit Pants	850
Shirt (upcharge)	96W
Tie	WRCO
Fullback Vest	HRCO
Jewelry	BLACK
Formal Shoes (upcharge)	BDS
Pocket Square (purchase only)	PKCO

#### Black Pant Option:

Modern Slim Fit Pants	850
-----------------------	-----

LIMITED SIZE SCALE



PLATINUM COLLECTION

PLATINUM COLLECTION



**Waverly Tuxedo**  
Style 751

**U** **ULTRA SLIM FIT**  
Trim and tapered styling, fits close to the body.

**Size Scale**

Men's coat sizes: 34-60  
Boys' coat sizes: 3-18  
991 pant sizes: 18-59

**Features:**

- ▶ Tailored to fit all body types
- ▶ Self shawl lapel edged in black satin, center-vented, 30" length
- ▶ Shown with black ultra slim fit pants with no stripe

**Fabric Content:**

100% Polyester

**To order ensemble as shown:**

Coat	<b>751</b>
Ultra Slim Fit Pants	<b>991</b>
Shirt (upcharge)	<b>96W</b>
Tie	<b>BXBL</b>
Fullback Vest	<b>EXBL</b>
Jewelry	<b>BLACK</b>
Formal Shoes (upcharge)	<b>BDS</b>
Pocket Square (purchase only)	<b>PWBL</b>

**White Pant Option:**

Modern Slim Fit Pants **750**

**Black Pant Options:**

Ultra Slim Fit Pants **991**  
Modern Slim Fit Pants **850**



**White Troy Tuxedo**  
Style 712

**M** **MODERN FIT**  
Fashion-forward styling with a flattering appearance.

**Size Scale**

Men's coat sizes: 34-66  
Boys' coat sizes: 3-18  
750 pant sizes: 18-65

**Features:**

- ▶ Satin notch lapel, non-vented, 31 1/2" length
- ▶ Shown with modern slim fit pants with a beaded stripe

**Fabric Content:**

100% Polyester

**To order ensemble as shown:**

Coat	<b>712</b>
Modern Slim Fit Pants	<b>750</b>
Shirt (upcharge)	<b>96W</b>
Tie	<b>BXWH</b>
Fullback Vest	<b>EXWH</b>
Jewelry	<b>PEARL</b>
Formal Shoes (upcharge)	<b>WAS</b>
Pocket Square (purchase only)	<b>PWWH</b>

**White Pant Option:**

Modern Slim Fit Pants **750**





stephengeoffrey

## Ivory Classic Shawl Tuxedo

Style 601



### SLIM FIT

Contemporary styling with a slimming appearance.

#### Size Scale

Men's coat sizes: 34-66

Boys' coat sizes: 3-18

991 pant sizes: 18-59

#### Features:

- ▶ Self shawl lapel, side-vented, 30<sup>1/2</sup>" length
- ▶ Shown with black ultra slim fit pants with no stripe

#### Fabric Content:

100% Polyester

#### To order ensemble as shown:

Coat	<b>601</b>
Ultra Slim Fit Pants	<b>991</b>
Shirt (upcharge)	<b>96W</b>
Tie	<b>BSAT</b>
Sash	<b>CUMB</b>
Jewelry	<b>BLACK</b>
Formal Shoes (upcharge)	<b>BDS</b>
Pocket Square (purchase only)	<b>PWBL</b>

#### Ivory Pant Option:

Modern Slim Fit Pants **650**

#### Black Pant Options:

Ultra Slim Fit Pants **991**

Modern Slim Fit Pants **850**



stephengeoffrey

## Ivory Troy Tuxedo

Style 602



### MODERN FIT

Fashion-forward styling with a flattering appearance.

#### Size Scale

Men's coat sizes: 34-66

Boys' coat sizes: 3-18

650 pant sizes: 18-65

#### Features:

- ▶ Satin notch lapel, non-vented, 31<sup>1/2</sup>" length
- ▶ Shown with modern slim fit pants with a beaded stripe

#### Fabric Content:

100% Polyester

#### To order ensemble as shown:

Coat	<b>602</b>
Modern Slim Fit Pants	<b>650</b>
Shirt (upcharge)	<b>96W</b>
Tie	<b>WRGO</b>
Fullback Vest	<b>HRGO</b>
Jewelry	<b>BLACK</b>
Formal Shoes (upcharge)	<b>COP</b>
Pocket Square (purchase only)	<b>PKGO</b>

#### Ivory Pant Option:

Modern Slim Fit Pants **650**



PLATINUM COLLECTION

PLATINUM COLLECTION

## Classic Notch Tuxedo

Style 820



**TRADITIONAL FIT**  
A classic, fuller cut tuxedo.

### Size Scale

expanded sizes available

**Men's coat sizes: 34-74**

**Boys' coat sizes: 2-18**

**850 pant sizes: 18-71**

### Features:

- ▶ Satin notch lapel, non-vented, 31½" length
- ▶ Shown with modern slim fit pants with a beaded stripe

### Fabric Content:

100% Worsted Wool

### To order ensemble as shown:

Coat	<b>820</b>
Modern Slim Fit Pants	<b>850</b>
Shirt	<b>85W</b>
Tie	<b>BSAT</b>
Sash	<b>CUMB</b>
Jewelry	<b>BLACK</b>
Formal Shoes (upcharge)	<b>BDS</b>
Pocket Square (purchase only)	<b>PSWH</b>

### Black Pant Option:

Modern Slim Fit Pants	<b>850</b>
-----------------------	------------



## White Classic Shawl Tuxedo

Style 701



**SLIM FIT**  
Contemporary styling with a slimming appearance.

### Size Scale

**Men's coat sizes: 34-66**

**Boys' coat sizes: 3-18**

**850 pant sizes: 18-71**

### Features:

- ▶ Self shawl lapel, flap pockets, non-vented, 30" length
- ▶ Shown with black modern slim fit pants with a beaded stripe

### Fabric Content:

100% Polyester

### To order ensemble as shown:

Coat	<b>701</b>
Modern Slim Fit Pants	<b>850</b>
Shirt	<b>85W</b>
Tie	<b>BSAT</b>
Sash	<b>CUMB</b>
Jewelry	<b>BLACK</b>
Formal Shoes (upcharge)	<b>BDS</b>
Pocket Square (purchase only)	<b>PSBL</b>

### White Pant Option:

Modern Slim Fit Pants	<b>750</b>
-----------------------	------------

### Black Pant Option:

Modern Slim Fit Pants	<b>850</b>
-----------------------	------------



## Classic Peak Tuxedo

Style 880



### TRADITIONAL FIT

A classic, fuller cut tuxedo.

#### Size Scale

expanded sizes available

**Men's coat sizes: 34-74**

**Boys' coat sizes: 2-18**

**850 pant sizes: 18-71**

#### Features:

- ▶ Satin peak lapel, center-vented, 31½" length
- ▶ Shown with modern slim fit pants with a beaded stripe

#### Fabric Content:

100% Worsted Wool

#### To order ensemble as shown:

Coat	<b>880</b>
Modern Slim Fit Pants	<b>850</b>
Shirt	<b>85W</b>
Tie	<b>BSAT</b>
Sash	<b>CUMB</b>
Jewelry	<b>BLACK</b>
Formal Shoes (upcharge)	<b>BDS</b>
Pocket Square (purchase only)	<b>PSWH</b>

#### Black Pant Option:

Modern Slim Fit Pants **850**



## Classic Peak Full-dress Tuxedo

Style 588



### TRADITIONAL FIT

A classic, fuller cut tuxedo.

#### Size Scale

**Men's coat sizes: 34-60**

**Boys' coat sizes: 3-18**

**850 pant sizes: 18-71**

#### Features:

- ▶ Six-button full-dress styling
- ▶ Satin peak lapel, center-vented tail, 42" length
- ▶ Shown with modern slim fit pants with a beaded stripe

#### Fabric Content:

100% Tropical Worsted Wool

#### To order ensemble as shown:

Coat	<b>588</b>
Modern Slim Fit Pants	<b>850</b>
Shirt	<b>36W</b>
Tie	<b>BPIQ</b>
Vest	<b>VPIQ</b>
Jewelry	<b>PEARL</b>
Formal Shoes (upcharge)	<b>BDS</b>
Pocket Square (purchase only)	<b>PSWH</b>

#### Black Pant Option:

Modern Slim Fit Pants **850**



FOR RENTAL